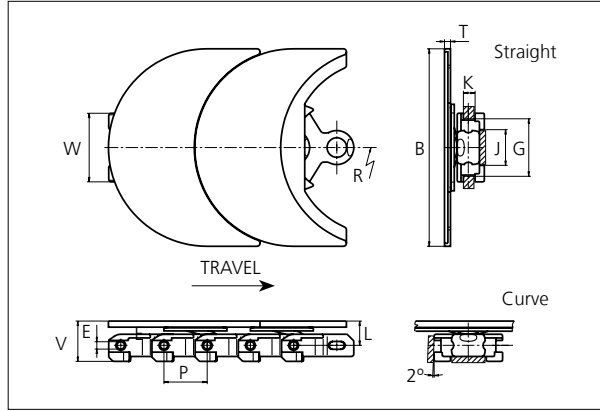


## uni Flex Plastic Chain

Series **uni 2700** Type **LH**



**uni Flex Chains**  
 Side flexing chain  
 Pitch: 70.0 mm (2.76 in)  
 Permissible tensile strength:  
 POM material 11000 N (2473 lbf)

Delivery: 2.5 m (8.25 ft)  
 No. of links/box: 36

**Note that the 2700 LH cannot backflex.**

NON STANDARD

B		E		G		J		K		L		P		T		V	
mm	in	mm	in	mm	in	mm	in	mm	in	mm	in	mm	in	mm	in	mm	in
320.0	12.60	12.0	0.47	92.0	3.62	57.0	2.24	19.0	0.75	38.9	1.53	70.0	2.76	9.5	0.37	65.9	2.59

All dimensions are for chains in POM material.

Width (W)		Recommended base material & color	Recommended plate material & color	Weight		Min. radius (R)	
mm	in			kg/m	lb/ft	mm	in
110.0	4.33	POM-LF <b>BR</b>	PA6 <b>K</b>	8.7	5.85	600.0	23.62


Non standard material and color: See uni Material and Color Overview.  
 Non standard pin material: See uni Material and Color Overview.

SIDE FLEXING

PITCH 70.0 MM/2.76 IN

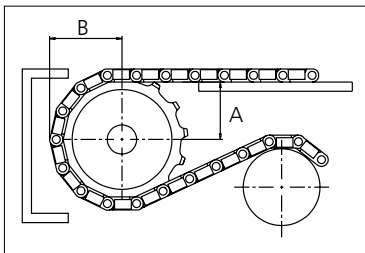
Any questions? Please contact us.

## Sprocket

No of teeth	Pitch diameter		Overall-diameter		Min. ø bore		Max. ø bore		Hub-diameter		A-dimension		B-dimension		Molded PA66 LG	Machined PA66 
	mm	in	mm	in	mm	in	mm	in	mm	in	mm	in	mm	in		
<b>Z8</b>	182.8	7.20	184.0	7.2	20.00	0.8	50.00	2.0	73.50	2.9	92.80	3.7	116.70	4.6		x
<b>Z10</b>	226.4	8.91	227.6	9.0	20.00	0.8	50.00	2.0	73.50	2.9	116.00	4.6	137.60	5.4		x

Non standard material and color:  
See uni Material and Color Overview.

### Machined sprocket



**Please ensure that sufficient size shaft and keyway are chosen for corresponding load.**

Other sprocket sizes are available upon request  
Width of tooth: 15.0 mm/0.60 in  
Width of sprocket: 42.3 mm/1.70 in  
uni Retainer Rings: See uni Retainer Ring data sheet

Any questions? Please contact us.